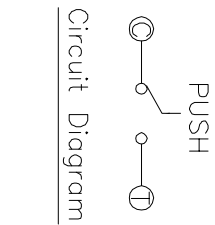
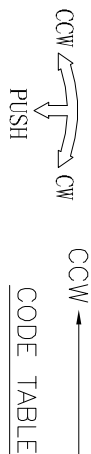
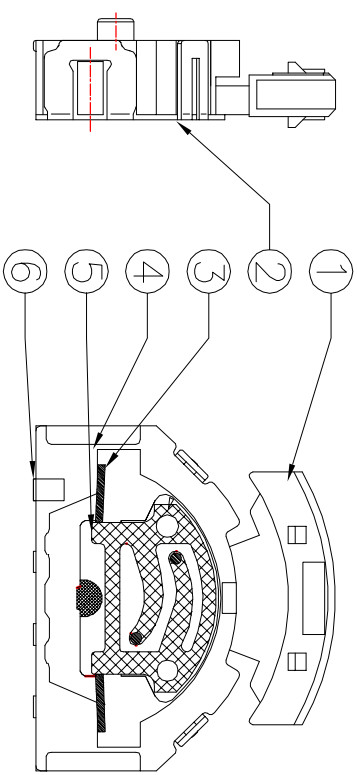
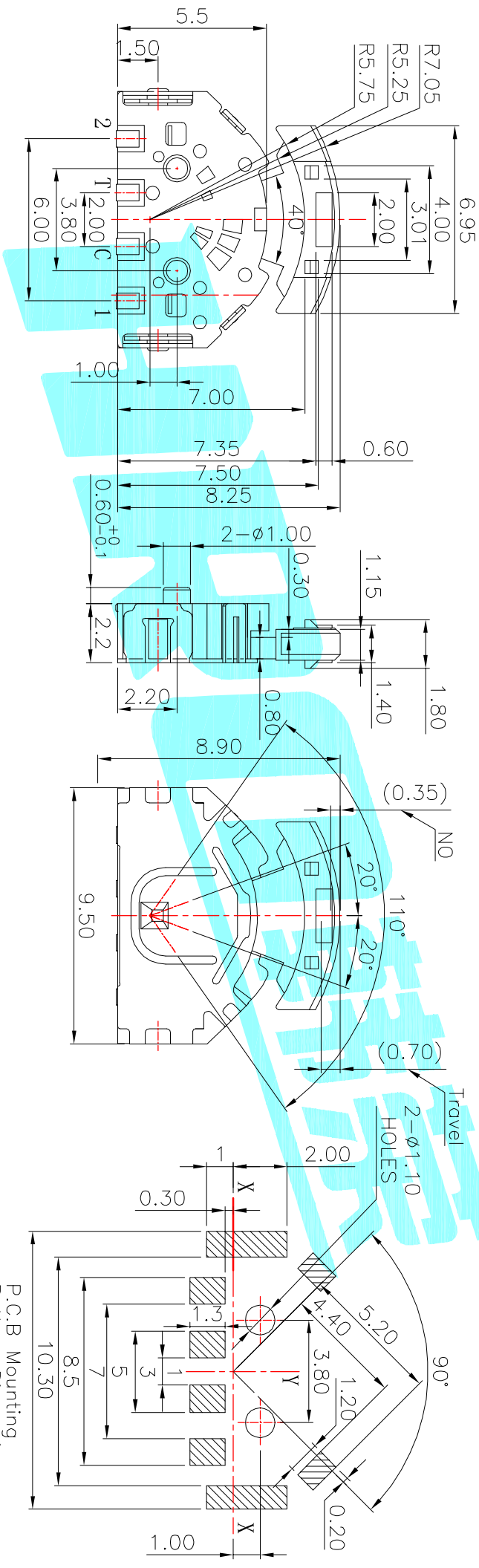


0° (ZZZZ=NO)

TER	ANG.	(20°)	(15°)	(15°)	(20°)
①					
②					
③					



NOTE:
 Operating Force:
 lever portion 70 ± 40 gf
 Push portion 250 ± 40 gf
 Travel: -25° 0° +25° Pushportion 0.7±0.1mm



ITEM	PART NAME	TER'NO.	QTY.	MATERIAL	FINISHING	REMARK
①	Contact	---	1	F.Ag/Brass	Plating silver	---
②	Terminal	---	4	Brass(O.15)	Plating silver	---
③	Base	---	1	Nylon	Black	---
④	Spring	---	1	SUS	Natural	---
⑤	Cover	---	1	SUS	Natural	---
⑥	Keystroke	---	1	Nylon	Black	---

APPROVALS		DATE
DRAWN	J.X.Zhong	2013/8/12

ECN NO.	REV.	DATE.	DESCRIPTION.	CHANGE.	CHECK.	APPRO.
---	A	---	NEW	---	---	---

CHECKED		APPROVALS		TOLERANCES ARE		ANGLE		UNIT:		SCALE:		PROJ:	
---	---	---	---	30~12.5	±0.30	10~30	±0.20	±2°	mm	1:1	---	---	---
---	---	---	---	5~10	±0.15	---	---	---	---	---	---	---	---
---	---	---	---	~5	±0.10	---	---	---	---	---	---	---	---



ELECTRONICS CO.,LTD

TITLE: MULTIFUNCTIONAL SWITCHS

PART NO. K1-1511SA-02

DRAWING NO. SHEET 1 OF 1