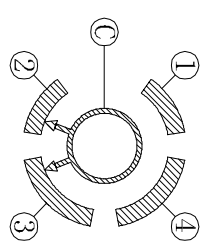


Terminal	Direction							
	1	2	3	4	5	6	7	8
C1					●			
C2					●			
C3	●							
C4								●

Circuit Diagram



NOTE:
Operating Force: 200±20gf

ITEM	PART NAME	TER. NO.	QTY.	MATERIAL	FINISHING	REMARK
⑧	Terminal		9	Bross(0.25t)	Plating silver	
⑦	Base		1	PPA	Brown	
⑥	Contact		1	Bross	Plating silver	
⑤	Knob		1	PP66	Black	
④	Spring Plate		1	SUS	Natural	
③	Cover		1	SUS	Natural	
②	Locking Plate		1	SECC	Plating Nickel	
①	Bolt		1	H62	Plating Nickel	

APPROVALS		DATE
DRAWN	J.X.Zhong	2013/8/7

TITLE: MULTIFUNCTIONAL SWITCHES
ELECTRONICS CO.,LTD

ECN NO.	REV.	DATE.	DESCRIPTION.	CHANGE.	CHECK.	APPRO.	TOLERANCES ARE	ANGLE	UNIT:	SCALE:	PROJ:	SHEET
	A		NEW				30~12.5 ±0.30 10~30 ±0.20 5~10 ±0.15 ~5 ±0.10	±2°	mm	1:1	PROJ: 1537SA-01	1 OF 1